

# MONTHLY MEMBERSHIP PROGRESS REPORT

District 41

Results as of: 6/30/2020

GMT:

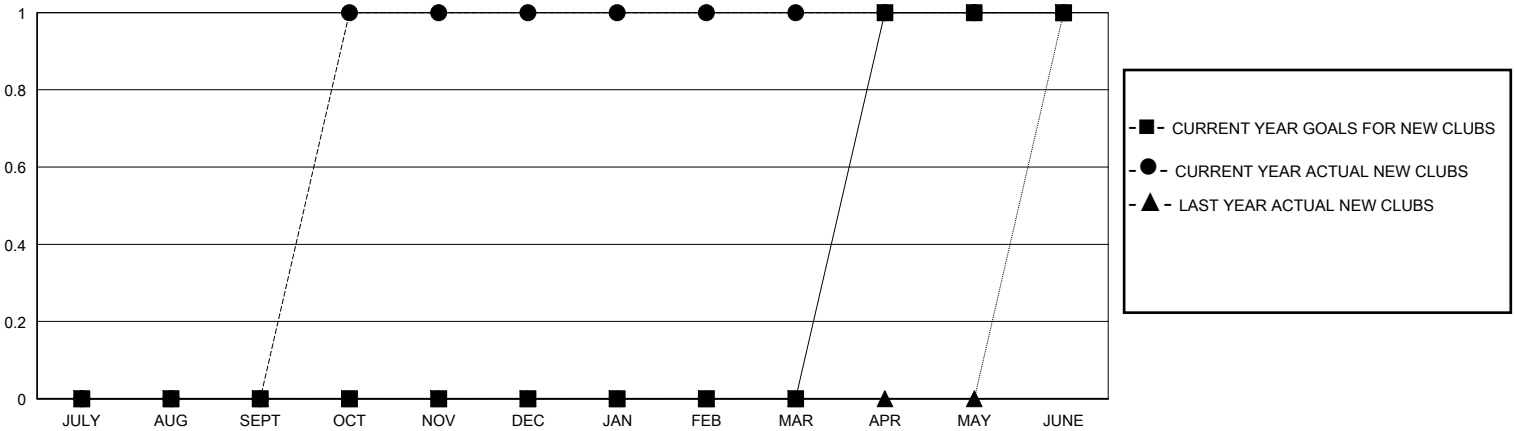
LOCATION MAINE

GMT CA

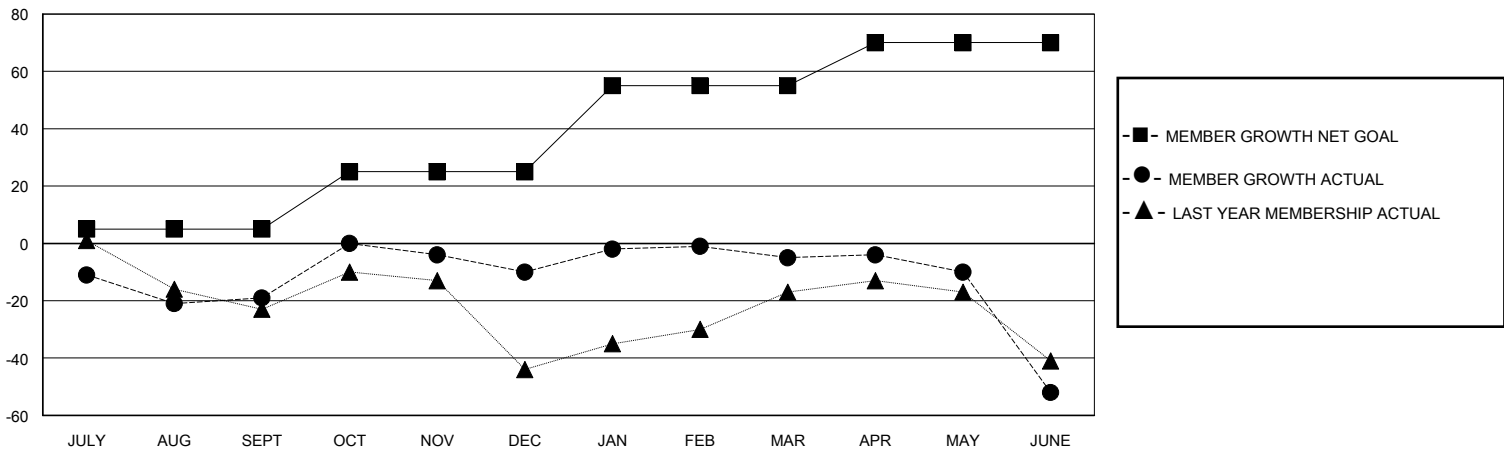
Clubs			
RESULTS FOR 2019-2020			
QUARTER	NEW CLUB GOAL	NEW CLUBS	DROPPED CLUBS
JULY/AUG/SEPT	0	0	1
OCT/NOV/DEC	0	1	0
JAN/FEB/MAR	0	0	0
APR/MAY/JUNE	1	0	0

Members			
RESULTS FOR 2019-2020			
QUARTER	MEMBER GROWTH NET GOAL	MEMBER GROWTH ACTUAL	DROPPED MEMBERS ACTUAL (including transfers)
JULY/AUG/SEPT	5	31	46
OCT/NOV/DEC	20	61	49
JAN/FEB/MAR	30	47	40
APR/MAY/JUNE	15	11	56

GOALS AND ACTUAL NEW CLUBS CUMULATIVE



GOALS AND ACTUAL MEMBERS CUMULATIVE



DROPPED CLUBS: 1

42 CLUBS OF 74 ADDED 1 OR MORE NEW MEMBERS

GENDER DISTRIBUTION

MALE 1,383 (68.09%)  
FEMALE 648 (31.91%)

DROPPED MEMBERS

DECEASED	38
CLUB CANCELLED	0
OTHER	153
<b>TOTAL</b>	<b>191</b>

[CLICK HERE FOR CUMULATIVE MEMBERSHIP DATA](#)

TOTAL FAMILY UNIT MEMBERS	475
FAMILY MEMBERS PAYING HALF DUES	245